

11HO10008

AltaCLINT

Goldwyn x
AltaFINLEY x
Addison

+3.01 PTAT

+2.69 UDC

+2.60 FLC

August new release **11HO10008 AltaCLINT** is a type specialist from the heart of a high production family. His sire stack of GOLDWYN X ALTAFINLEY X ADDISON will surely enable him to produce daughters that please even the most demanding type breeders.

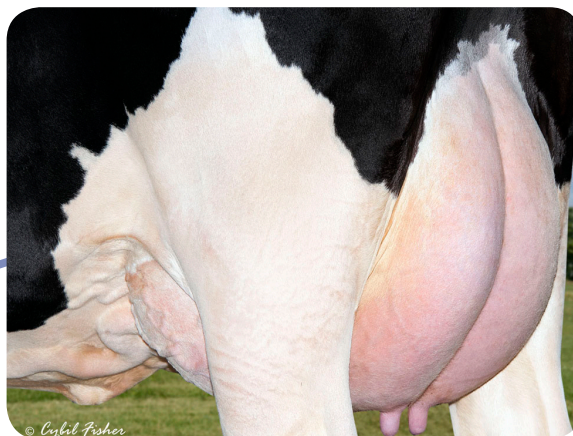
Breeding Pattern:

Advantage® Consultants describe daughters of AltaCLINT tall, strong and stylish. Udders are outstanding with flawless attachments on both ends, and rear udders are exceptionally wide. Cows walk out on feet that track straight from the rear and foot angle is steep. AltaCLINT's status as #1 Type bull for Alta match reported comments from daughters seen in the field by Advantage® Consultants.

Cow Family:

His dam is an EX ALTAFINLEY daughter that is black and silky with a massive frame and open rib structure. She is very long through her neck and frame and straight topped, and walks on correct feet and legs. Her udder is carried extremely high above her hocks and has beautiful shape and strong attachments. Her overall width is impressive, especially as you view her from the rear.

The second dam of ALTA CLINT is also a large black cow with tremendous frame and strength. She has great width of chest and rump and moves easily on rear legs that are straight when viewed from side and rear. Yet she is also open ribbed and angular for such a strong cow. Her udder is well-attached, being especially pleasing in the fore udder attachment.



Twin-Birch Clint 8251
Twin Birch Dairy, Skaneateles - NY

AltaCLINT is an ideal mating on AltaROSS and AltaOMAX daughters and other OMAN granddaughters, as well as AltaARMSTEAD and AltaDREW daughters that need strength and substance.

He's got the Type Game Cornered