



Fertility & Genomics Reign Supreme AUGUST 2011 Sire Summary

The Alta/Jerseyland Sires Jersey program has a lot to talk about for the August 2011 sire summary. Highlights include sire fertility and genomics. Many new sires have reached ConceptPlus designation for their ability to get cows pregnant. This is something that dairymen across the globe can agree on for making a significant economic impact.

The genomic offering through the G-Star and Future Star programs continues to grow as elite genetics become available and dairymen's demand increases. Quicker genetic progress can be achieved by selecting a team of these sires that best fits your dairies goals. Ask about how ValueBuilder can aid in creating your own index.

CREATE VALUE ▲ BUILD TRUST ▲ DELIVER RESULTS

New Daughter Proven Releases

11JE0959 Trinityts Iatola PAPPY - ET (Iatola x Abe x Arco) 157 JPI™

Cheese production from appealing cows will reign supreme with PAPPY. He is an early Iatola son whose pedigree shows a complimentary combination of type and production. From the paternal side comes all around exceptional type with size and welded on mammary systems. From the 122JE5198 ABE maternal side comes component rich milk and longevity. PAPPY is a breed leader for JUI™ and percent components.

+5.67 JUI™ +1.5 PTAT +0.11% P +0.21% F +61 CFP +3.9 PL +0.9 DPR

11JE1073 Pannoo Abe VANAHLEM (Abe x Flowerpower x Taranak) 115 JPI™

While not NEW to Australia, VANAHLEM semen is NEW in the United States market for the August 2011 sire summary. VANAHLEM comes from the land down under, our Australian program. This family is a household name around the globe. Sired by 122JE5198 ABE, VANAHLEM's dam, Flowerpower Vanessa, is a full sister to CSCNarvara who was the #1 Australian and US sire in 2008. She also was the top selling lot at the 2005 International Dairy Week. His MGD, Tarank Vanessa SUP 92 EX 7, is a part of 5 consecutive generations to be rated in the top 15 in Australia for ASI. VANAHLEM is a clear leader in Australia for type and mammary system.



+1028 M +33 P +41F +5.6 EFI



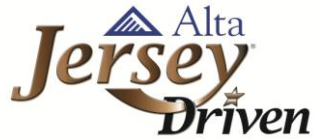
G-Star sires represent an opportunity to fast forward genetic progress on your dairy. By using this group of sires that possess the highest genetic potential of bulls sampled in Alta Jersey Partner Dairies, you can dramatically reduce the time it takes to make maximum genetic progress.

- 7 offered
- 7 different sires represented
- 6 new additions
- 2 available as 511 sexed semen

FutureStar sires are bulls whose combination of genomic parent average with actual Alta Jersey Partner Dairies test results for sire fertility makes them, as a group, of significant interest to clients in advance of being fully proven. **FutureStar** bulls represent Alta's strongest candidates for successful future graduation into the proven lineup.

- 12 offered
- 11 different sires represented
- 6 graduates from G-Star program
- 6 available as 511 sexed semen

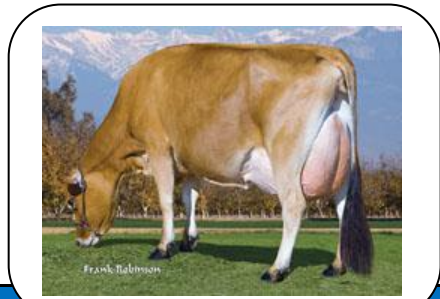
	#	JPI	CM\$	NM\$	PTAM	PTAP	PTAP%	PTAF	PTAF%	CFP	PTAT	JUI	PL	DPR
G-Star	7	159	453	414	787	32	0.02%	48	0.06%	80	1.3	3.29	3.8	0.0
FutureStar	12	165	429	409	1090	36	-0.01%	49	-0.01%	85	1.3	3.09	3.5	-0.1



Clients joining the JerseyDRIVEN program have additional access to the newest genomic sires available. Be sure to ask your sales representative for additional details

	#	JPI	CM\$	NM\$	PTAM	PTAP	PTAP%	PTAF	PTAF%	CFP	PTAT	JUI	PL	DPR
JerseyDRIVEN	7	182	494	460	907	35	0.01%	49	0.03%	84	1.8	4.68	4.5	0.3

Daughter Proven Highlights



Top 25 JPI™

		JPI	CM\$	NM\$	PTAM	PTAP%	PTAF%	CFP	PTAT	JUI	PL
11JE0943	VICTOR	170	401	397	1377	-0.03%	-0.05%	96	1.1	2.42	3.0
11JE0944	PAUL	168	364	352	1339	-0.03%	-0.12%	78	1.3	5.09	2.5
11JE0928	ABBOTT	168	495	442	940	0.03%	0.07%	97	0.7	1.70	4.0
11JE0959	PAPPY	157	479	395	26	0.11%	0.21%	57	1.5	5.67	3.9
11JE0921	KILOWATT	155	496	446	518	0.03%	0.07%	62	0.3	2.60	4.1
122JE5198	ABE	154	486	421	823	0.05%	0.13%	102	0.1	-0.7	3.6
11JE0930	GHENT (PR)	146	359	342	1127	-0.02%	-0.07%	74	1.4	2.69	3.6

*Rank on AJCA US Proven 70% reliability summary

Second crop daughters are just beginning to calve on 11JE0826 CELEBRITY and continue to stamp his signature type. CARRIER, RUBEX, DUKE, FOREST and TUESDAY continue to add daughters and maintain user satisfaction.

The August 2011 sire summary has added many new names to the Alta lineup through G-Stars, Future Stars and daughter proven sires. Something for everyone – that’s been our motto – and Alta has the tools to help you create your genetic plan.